



The DSS for the olive grove

Why choose



**Increase**

quality and quantity of  
olives and oil



**Monitor**

the olive grove, even  
remotely



**Reduce**

management costs



**Defend**

in advance from the  
Olive Fly



**Optimize**

the use of inputs (water,  
treatments, fertilizers)t



## FIELD MAPPING

Geolocate the field on the map and draw it: features will be immediately hooked. You can enable the cadastral map and enter sheet and parcel information.

Use one of the following methods to create your field.



### Draw on map

Locate the plot on the map and draw it manually.

✓ Select



### Automatic detection

Locate the plot on the map and enable automatic detection to map the field with just one click.

✓ Select

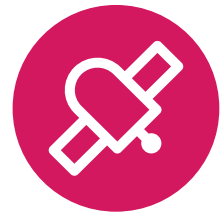


### Upload files

Upload a .shp or .kmz file..

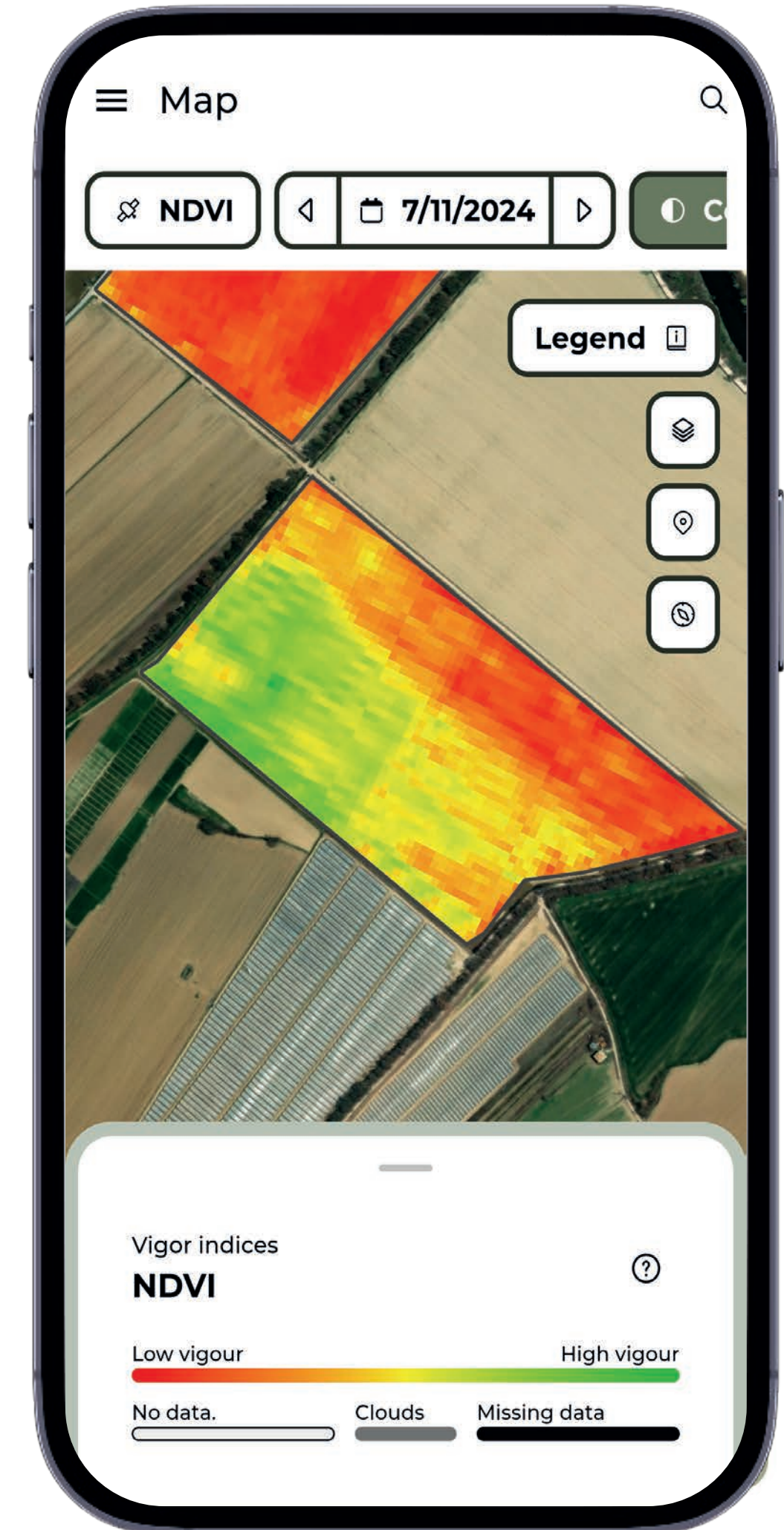
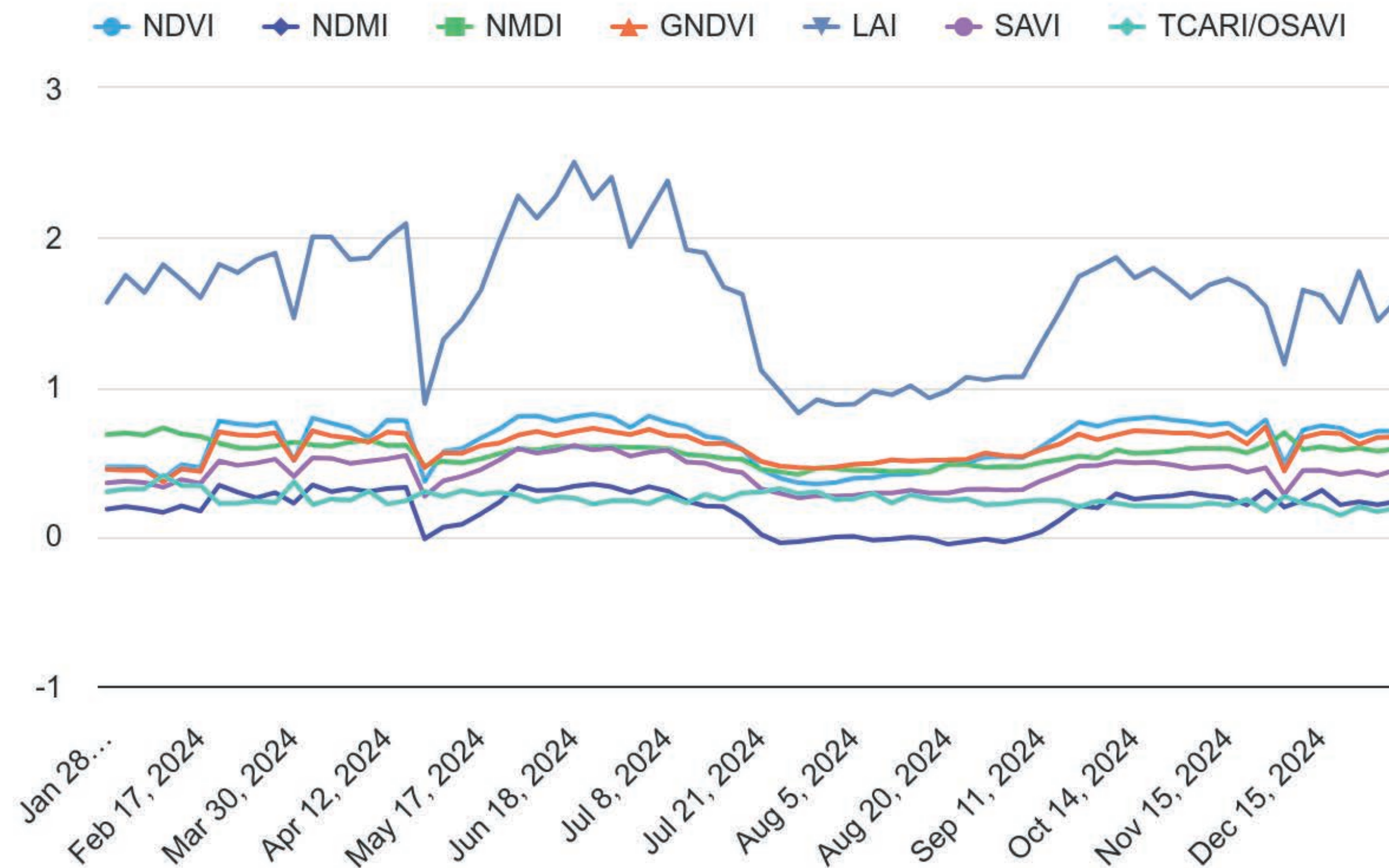
✓ Select





## SATELLITE IMAGERY

Consult Sentinel-2 satellite images with vigor, water stress and chlorophyll indices to assess crop health and plan monitoring activities.



# Features



## WORK



### TASK MANAGEMENT

Create and assign to your collaborators the activities to be carried out in the farm in real time.



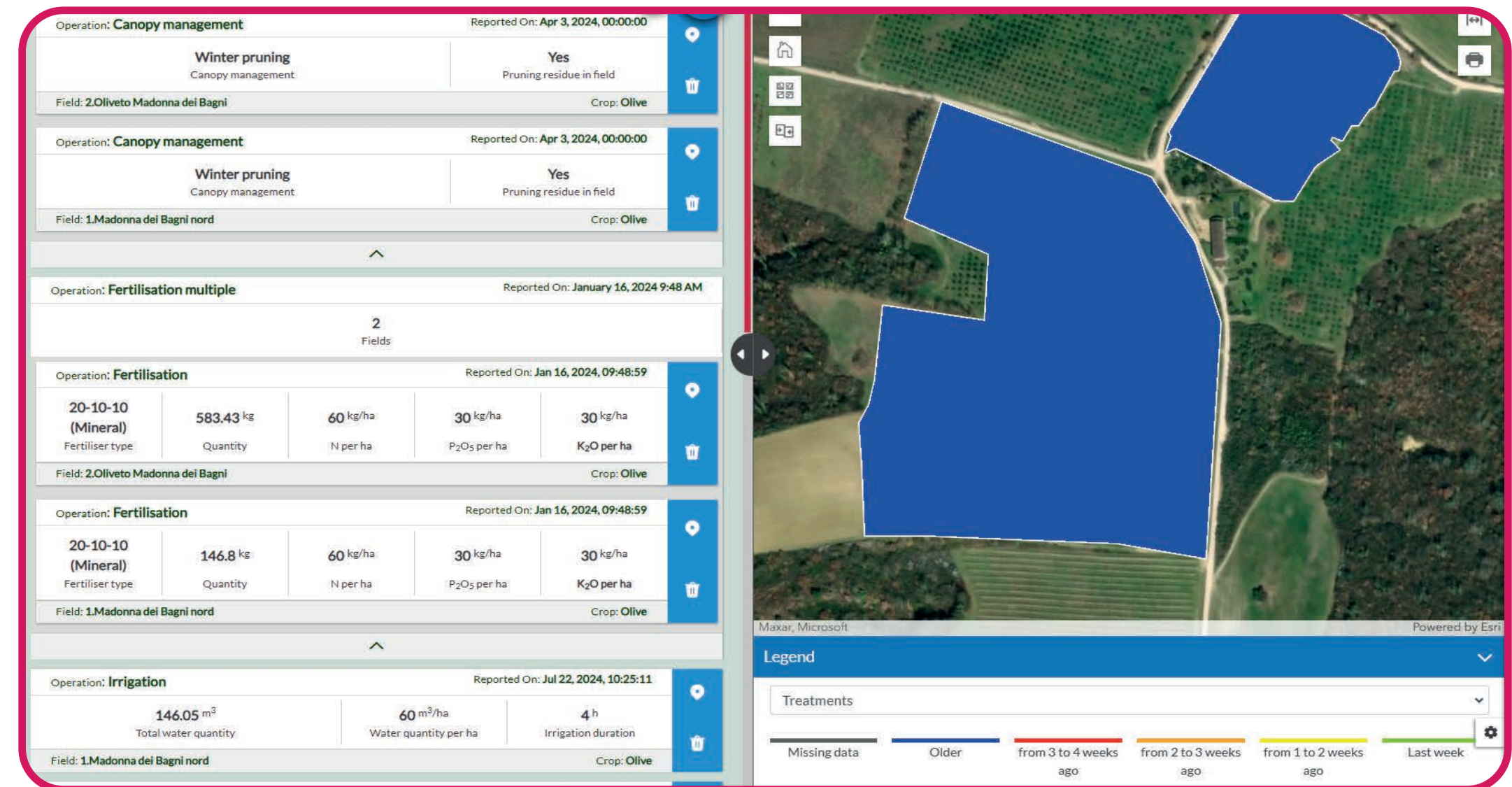
### CROP OPERATIONS

Register where, how and when crop operations such as irrigation, treatments and fertilization have been carried out.



### MACHINERY

Register your agricultural machinery, any problems and maintenance carried out. You can also connect them to Agricolus by using **Agrirouter**.



Lot code: J12756



Landing page

<https://web.agricolus.com>



[Visit page](#)



The QR code on the mask will allow easy access to the web page dedicated to the product traceability. In this way, all detailed product information can be consulted with great convenience









## PRODUCTION LOTS


Create and assign to each crop its own production lot to improve **traceability** of operations. A **QR code** is also generated that allows you to access and share the dedicated web page where you can consult all the information on the product.



## SUSTAINABILITY

Monitor the **economic** (yield, production) and **environmental** (water consumption, input control and farm biodiversity) **sustainability indicators** of your farm. You can set the level to be reached for each indicator and monitor how the work is going.

-  Economic 
-  Environmental 
-  Targets List 

 ENVIRONMENTAL INDICATORS ENVIRONMENTAL ?

Environmental indicators focus on the impact of agricultural practices on the surrounding environment

### Water

Indicator	Value
Total water consumption	5980.21 m <sup>3</sup>
Average water consumption	163.1 m <sup>3</sup> /ha

### Fertilizer

# Features

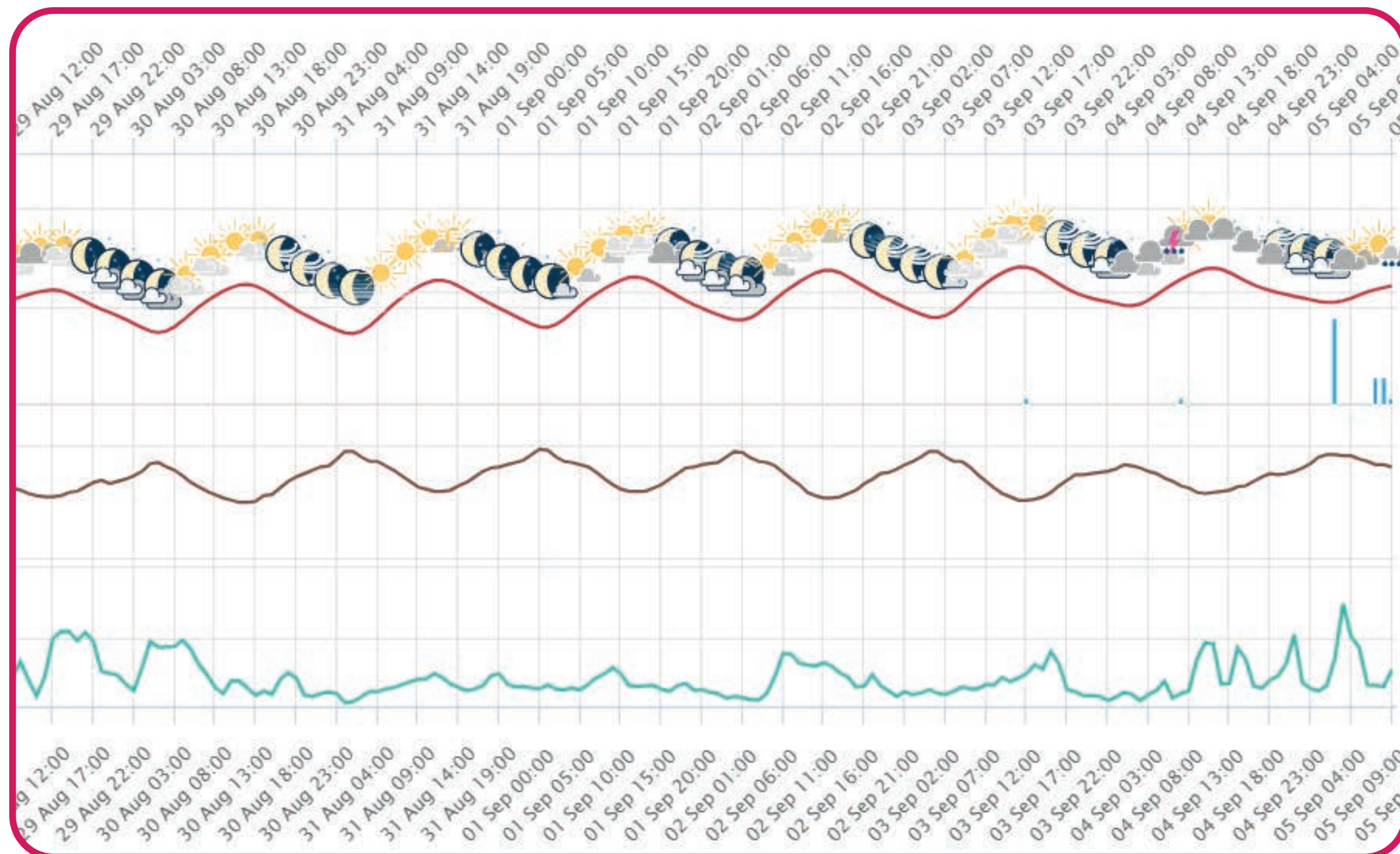


## WEATHER



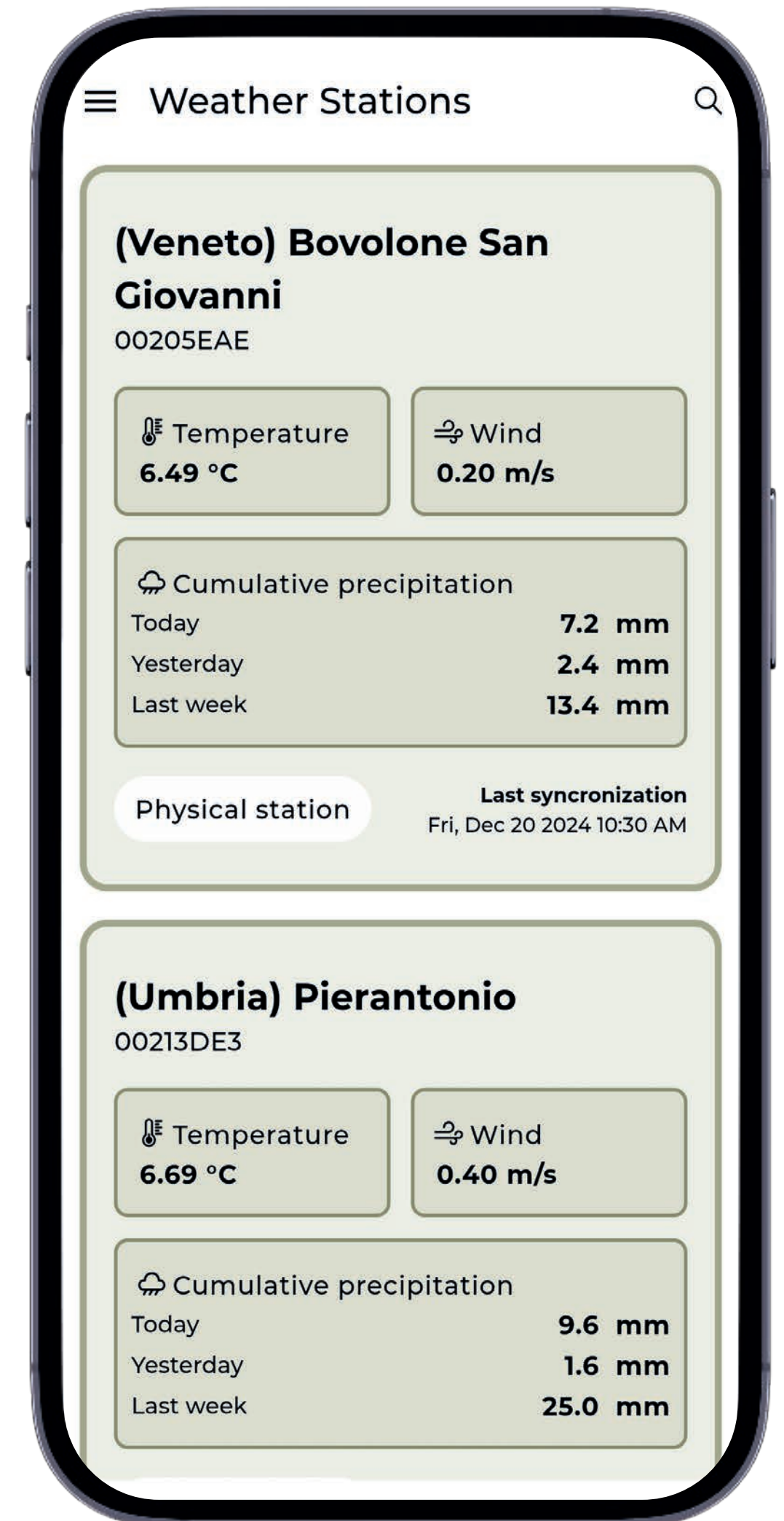
### WEATHER FORECASTS

Consult professional weather forecasts up to 7 days updated every hour: **temperature, humidity, wind speed, rainfall.**



### WEATHER STATIONS

**Virtual weather station included;**  
\*physical weather stations and sensors can be purchased or integrated, if already present in the company.





# Features



## FORECAST MODELS



## PHENOLOGY

Prediction of phenology to assess olive grove needs in each development stage.



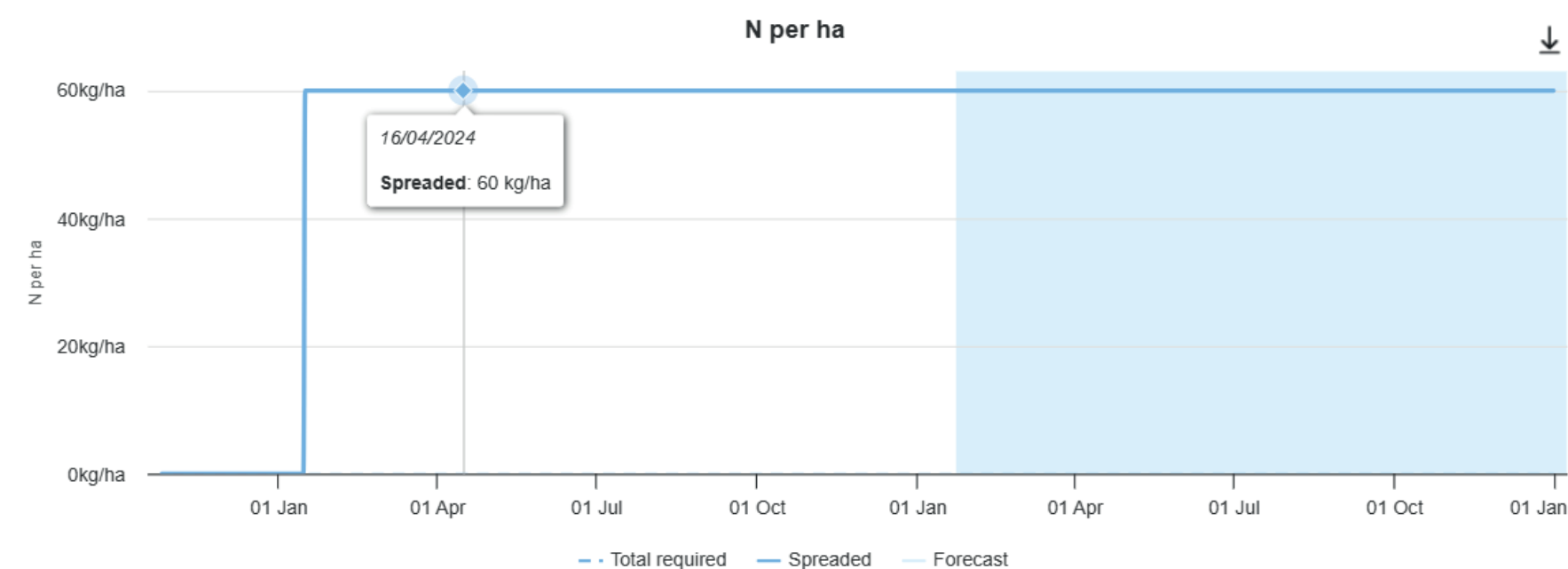
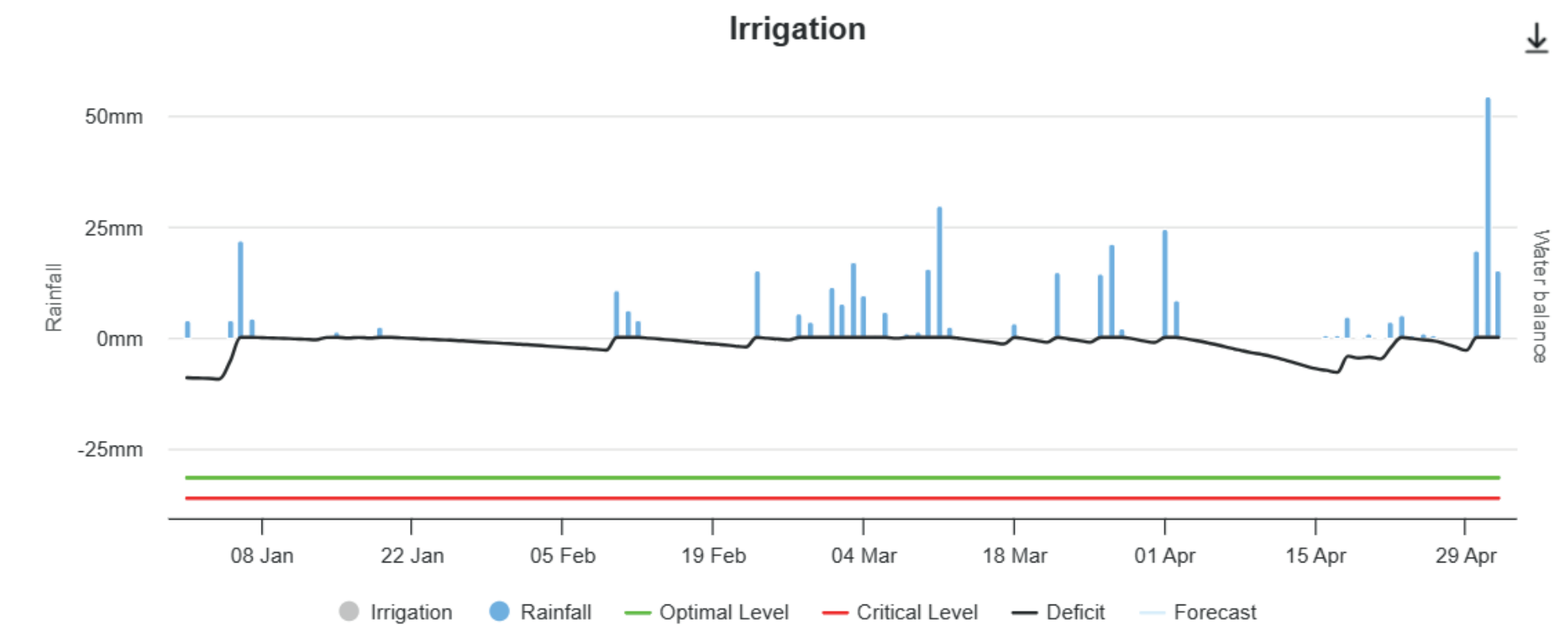
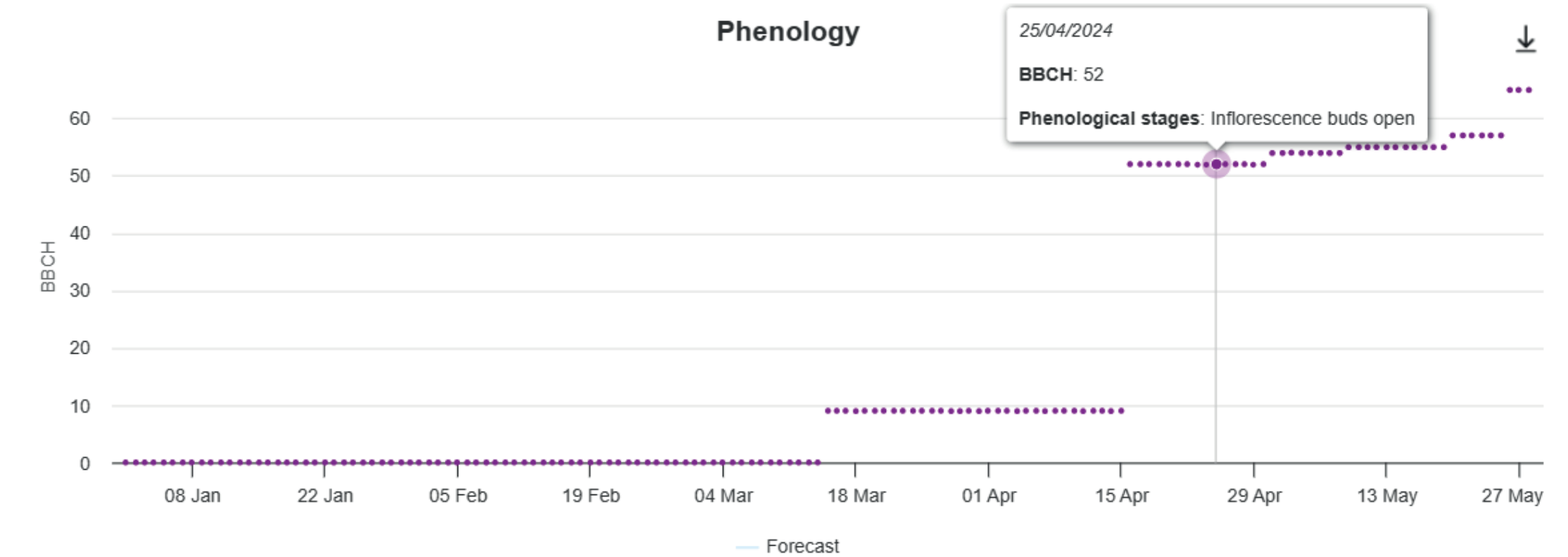
## IRRIGATION

Evaluation of water requirements to carry out irrigation when necessary with the right amount of water.



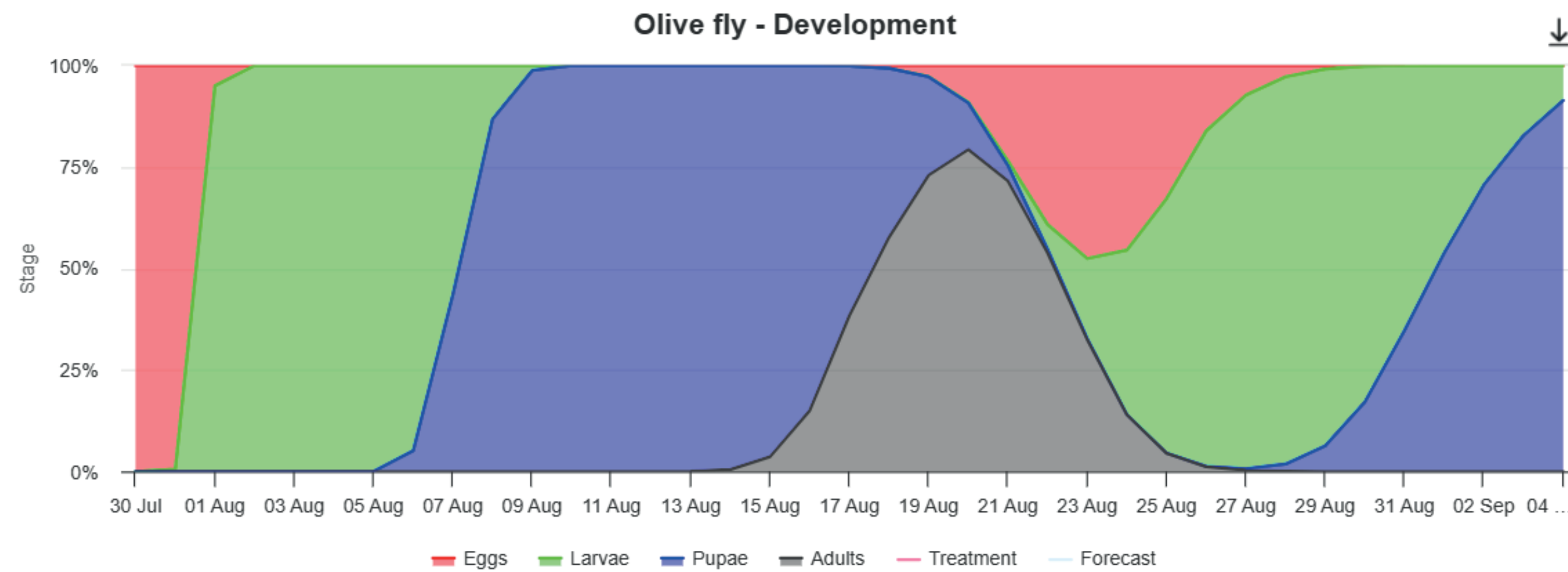
## FERTILIZATION

Calculation of the total nitrogen, phosphorus and potassium needs (Kg/ha) required by the crop in order to obtain important suggestions on the doses of fertilizer to be applied.





## PESTS AND DISEASE MODELS

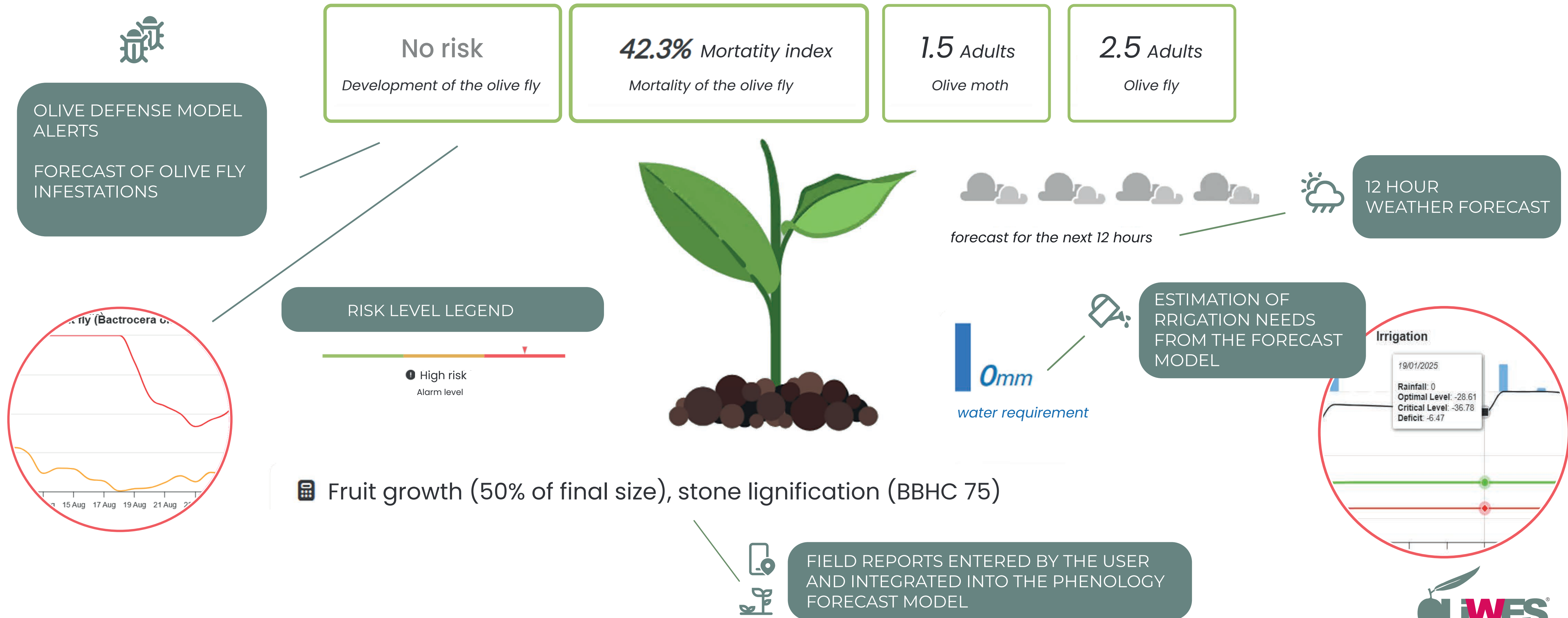


Prediction of infestations to assess the risk of pest (**Olive fruit fly**) and act promptly



## DECISION SUPPORT

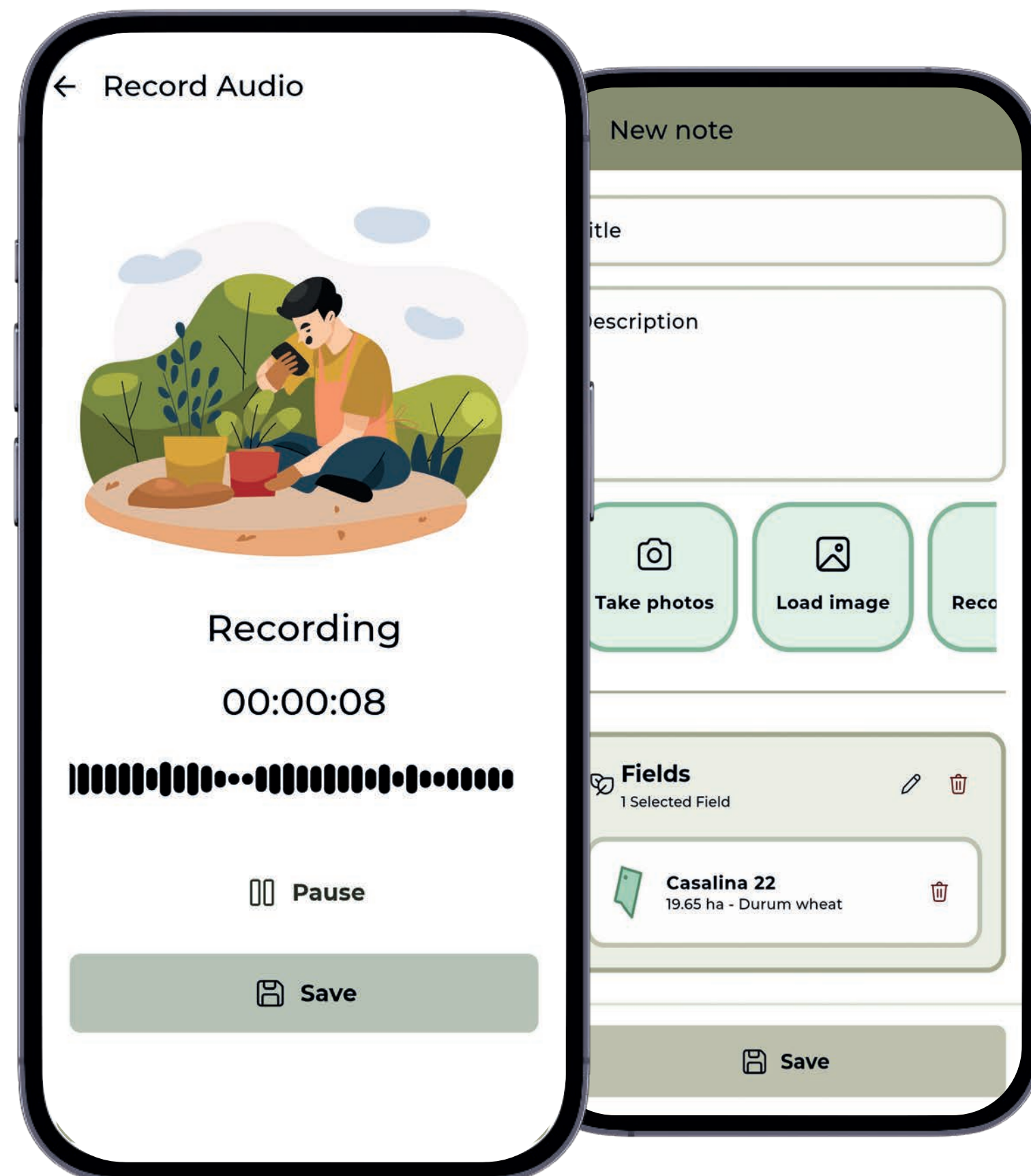
Provides information on the interventions to be carried out on the basis of the data collected.





## CROP SCOUTING

Geolocate and register into the platform the field activities with **Agricolus's App**: phenology, pests and diseases, traps and captures, crop damage, soil analysis and issues.



- ⓘ ISSUES
- ⚠ CROP DAMAGES
- 🕒 TRAPS
- 📅 CATCHES
- 🌱 PHENOLOGY
- 🦟 PESTS AND DISEASES
- 🧪 SOIL ANALYSIS

# Features

Sep 5, 2022 Sep 7, 2022 Sep 10, 2022 Sep 12, 2022 Sep 15, 2022

Fertilizer name: 20-10-10 (concimazione autunnale) Nutrient %: 20 %

Number of Zones (max: 7): 4 Calculation mode: Average - direct

Avg nutrient: 40 kg/ha Variation from avg: 10 %

Zones	Area	Avg nutrient
Zone -2	0.68 ha	43,9 kg/ha
Zone -1	2.16 ha	41,9 kg/ha
Zone 0	3.76 ha	39,91 kg/ha
Zone 1	3.06 ha	37,91 kg/ha
<b>Total fertilizer</b>	<b>1934.83</b>	<b>kg</b>
<b>Total area</b>	<b>9.67</b>	<b>ha</b>
<b>Avg nutrient</b>	<b>40</b>	<b>kg/ha</b>

NDVI



## PRESCRIPTION MAPS

Choose the most suitable vegetation index to develop the prescription map and carry out variable rate fertilization.



Agricolus s.r.l.

---

Via Settevalli, 320  
06129 Perugia

VAT number 06716550485  
Tel +39 075 997 5503

discover@agricolus.com  
www.agricolus.com